



THE CRYSTAL BALL

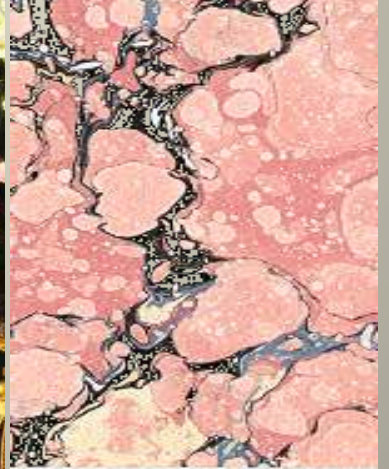
DECEMBER 2015

The Vaults presents The Crystal Ball, Christmas 2015. Together with theatrical designers Darling and Edge, with dining from The Recipe, we take you on an adventure to the underground world of a princesses' palace, hidden glittering forests, and sparkling lakes. Inspired by the Grimm Brothers' *12 Dancing Princesses* and the decadent artwork of Kay Nielsen. Expect a lot of glitter and glamour as the princesses take you on a journey through their favourite places to party.

WELCOME ADVENTURERS

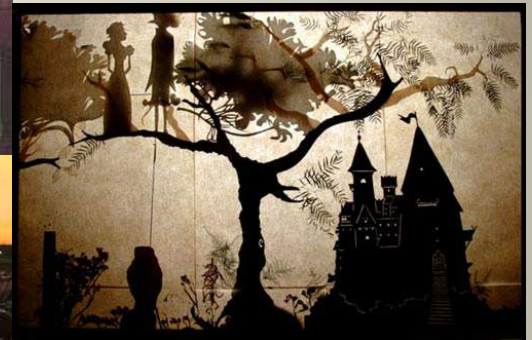
Welcoming you into the Palace, the entrance tunnel is dressed with tatty vintage fabrics, pink roses, marbled peeling wallpaper and pink neon lights, for a wonderfully quirky mix of retro kitsch and fierce attitude.







As an appetiser to the main events, your guests will be treated to a life-sized toy theatre, rows of deck chairs and a shadow puppet rendition of the Grimm Brothers' famous tale of the 12 *Dancing Princesses*.



THE THEATRE

WARDROBE PLEASE



The princesses' wardrobe is their most prized possession, find out why they hold it so dear as it reveals the entrance to their secret magical worlds.



THE SILVER FOREST



Your guests will quickly discover the Silver Forest, it is a magical enchanting space of fog, silver tree branches, twinkling lights and strands of silver foil that hang like willows in the moonlight. Bites to eat will seem to float around the space, while the bubbles flow freely.





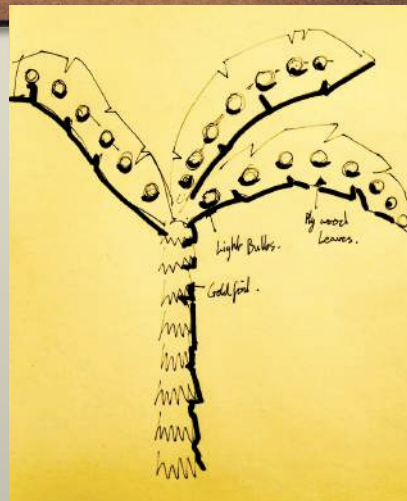


THE SILVER SISTER

THE GOLDEN FOREST



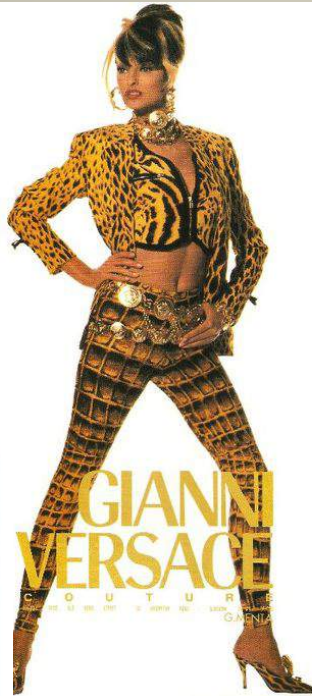
Upstairs, a second reception space awaits in The Golden Forest. Unlike any normal forest of the imagination, this is a retro casino flooded with golden light, golden palm trees that stand tall and giant golden signs that add the bling. What better place to take a rest than amongst the glowing golden forest.







© Splash News



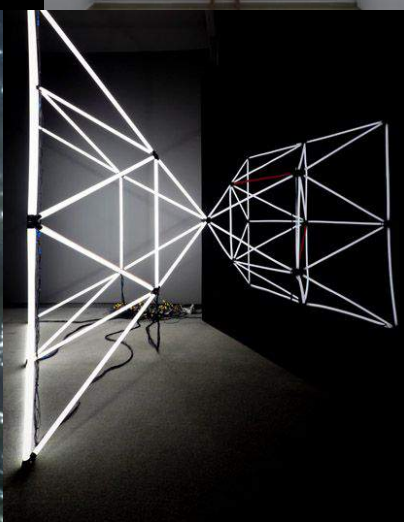
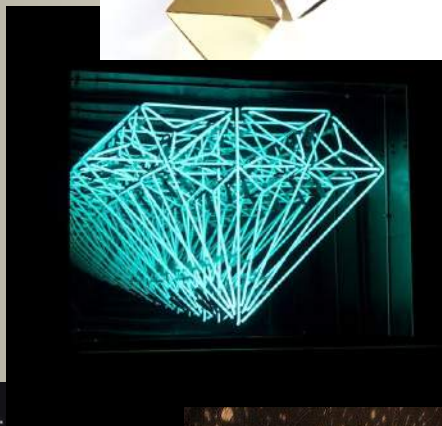
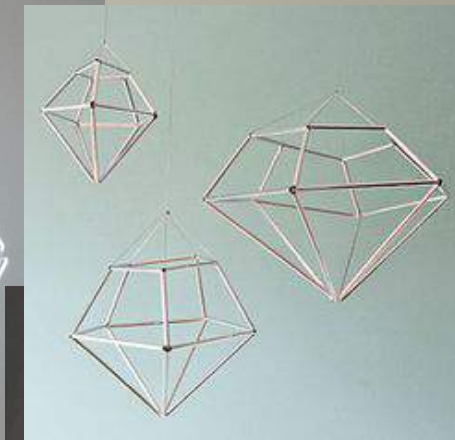
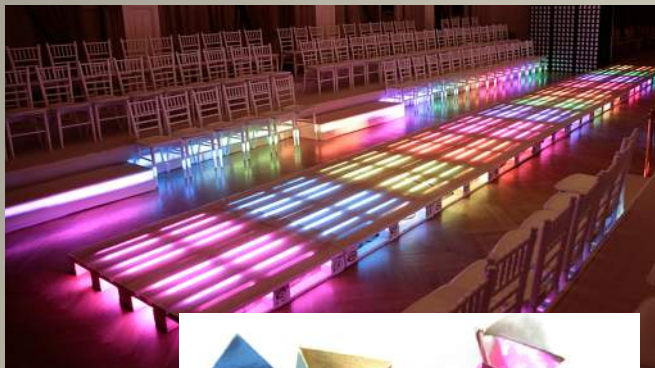
THE GOLDEN GIRL



THE DIAMOND FOREST

As the night gets deeper, your guests will find themselves lost in The Diamond Forest. Huge neon diamonds and mirrored crystals drip from the ceiling, crystal shapes scatter the walls and thick clusters of paper crystals look as though they are growing out from the corners of the room. Your guests will feel the power of the forest take over their feet as they dance till their shoes can dance no more.





THE DIAMOND DIVA



Large Clip in Mohican.

EL Wire Boning, Diamond Pattern.

large Pockets for hanging out
Glow sticks.

Glittery fabric - Iridescent
Possibly with fairy lights.

This girls a Raven
with an 80s
Sci-fi twist.

Diamond
Dame.

THE SWAN LAKE



Not wanting the exploration to finish there, The Swan Lake will open late at night. A mysterious water effect drifts through the tunnel, while the magical sounds of the lake fill the air. Your guests will be swept away on the swan boats to find their princes.

CONTACT US

Bespoke design and theming by immersive artist experts Darling & Edge
Light show across the whole space, intrinsic to the design and journey
Live performances and interactive theatre
Excellent chosen party tunes from our experienced DJs
Supervised cloakroom for all guests bags and coats

Exclusive venue hire from 7pm - midnight for parties from 250 - 900
Exquisite catering from The Recipe, caterer of the year 2010 and 2012
Unlimited prosecco reception for the first 45 minutes
followed by unlimited beer, wine and softs

3 Grab food items per person
4 Bowl food items per person
Menus available on request

christmas@the-vaults.org
0207 033 4280
www.the-vaults.org



THE VAULTS